



JCP.2 SERIES

- ✓ Full aluminium frame.
- ✓ Large and robust with 25 m² of shade.
- ✓ **Telescopic opening system:** easy to open and close without touching furniture.
- ✓ Gutters available to connect multiple umbrellas.
- ✓ Perfect for large terraces.
- ✓ Belgian design.

Two series offers outdoor umbrellas that play a central role on your terrace. A true eye-catcher, providing up to 25 m² of shade. Thanks to a telescopic system, you can smoothly open and close the sturdy umbrella at arm height without touching other furniture. Despite their strength, the umbrellas are very mobile and are supported by a base of 158 kg with four wheels that rotate 360°. Each wheel is equipped with a brake to always secure the umbrella. They are the perfect solution to large outdoor areas because of their innovative design and taut incline. Two Series is available in three sizes, five frame colours and a variety of canopy colours.

FRAME	Center pole umbrella with crank handle and telescopic opening system. Pole and ribs are aluminium powder coated. Pole profile: 81 x 81 x 2,8 mm, 3,2 x 3,2 x 0,1". Ribs profile: 32 x 32 x 1,6 mm, 1,3 x 1,3 x 0,06".
CANOPY	320g/m ² Sunbrella® Plus, 100% solution dyed acrylic.
BASE	Hot galvanized and powder coated steel plates.
TILT & ROTATION	Not applicable.
WIND SPEED	58 km/h, 36 mph - Maximum wind speed to which the umbrella may be exposed.



JCP.201
400 x 400 cm

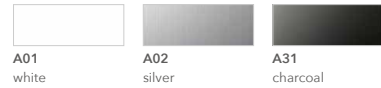


JCP.202
500 x 500 cm

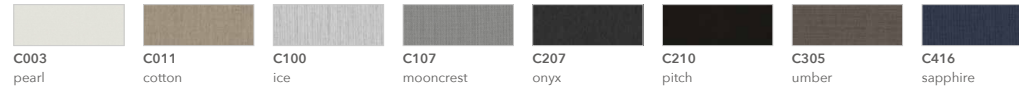


JCP.203
ø 450 cm

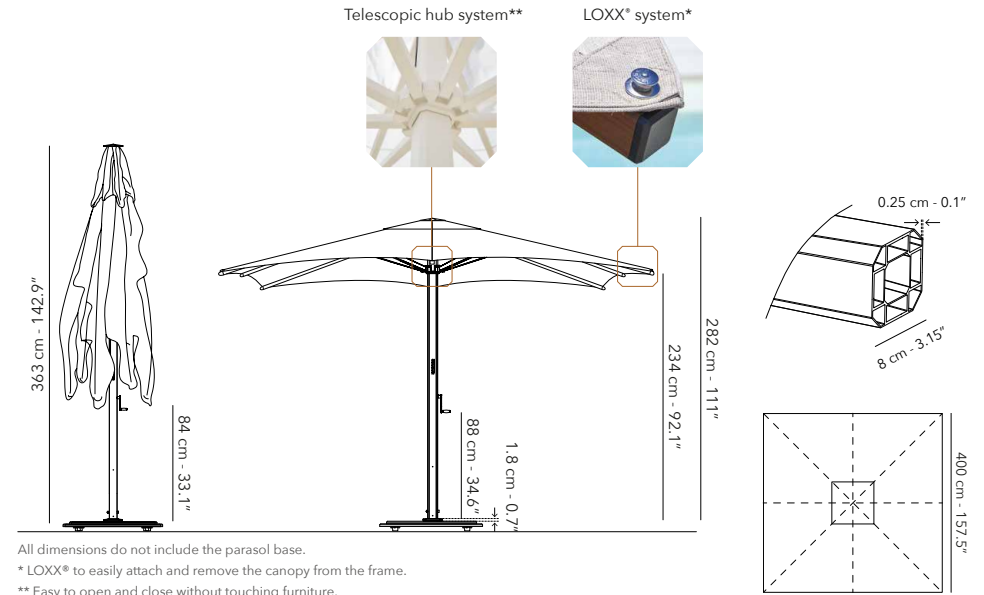
FRAME



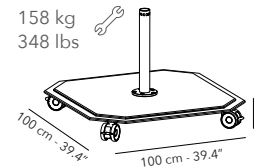
CANOPY



JCP.201 - 400 x 400 cm	Weight net	Weight gross	Packaging CBM / CCF	Units
UMBRELLA FRAME & CANOPY	56 kg 123.5 lbs	59 kg 130.1 lbs	370 x 38 x 38 cm 145.7 x 15 x 15"	1
UFJCP.201 FRAME ONLY INCL. PROTECTION COVER	51 kg 112.4 lbs	52 kg 114.6 lbs	370 x 38 x 38 cm 145.7 x 15 x 15"	1
UCJCP.201 CANOPY ONLY	5 kg 11 lbs	7 kg 15.4 lbs	60 x 46 x 11 cm 23.6 x 18.1 x 4.3"	1
UBJCP.2S-3S BASE	158 kg 348 lbs	167 kg 368.2 lbs	103 x 103 x 17 cm 40.6 x 40.6 x 6.7"	1
UBIGB-JCP.2S-3S IN GROUND BASE	6 kg 13.2 lbs	7 kg 15.4 lbs	27 x 52 x 27 cm 10.6 x 20.5 x 10.6"	1
UBOGB-JCP.2S-3S ON GROUND BASE	6.5 kg 14.33 lbs	7 kg 15.4 lbs	27 x 27 x 6 cm 10.6 x 10.6 x 2.4"	1
UPJCP.3S-X77 PROTECTION COVER	0.8 kg 1.8 lbs	1 kg 2.2 lbs	17 x 48 x 4 cm 6.7 x 18.9 x 1.6"	1

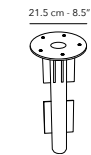


All dimensions do not include the parasol base.
 * LOXX* to easily attach and remove the canopy from the frame.
 ** Easy to open and close without touching furniture.



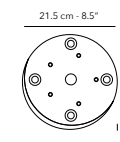
BASE

- Base with four wheels that rotate 360°, each with a brake to secure the umbrella.
- Has the same colour as the frame.
- We provide a charcoal parasol base for a frame in alu teak and cappuccino.



IN GROUND BASE

Anchored in the ground with concrete. Fixed and cannot be moved.



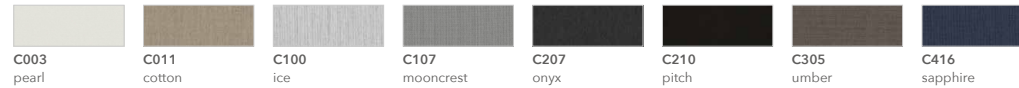
FLOOR FIXING PLATE

Anchored in the ground with concrete. Fixed and cannot be moved.

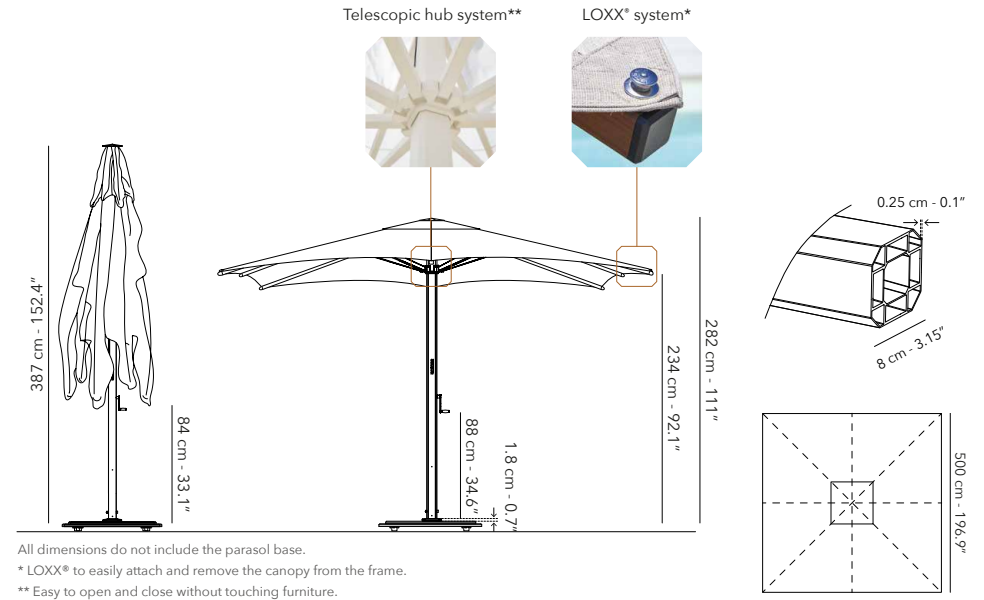
FRAME



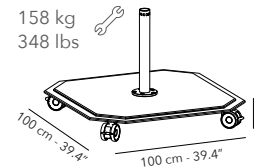
CANOPY



JCP.202 - 500 x 500 cm	Weight net	Weight gross	Packaging CBM / CCF	Units
UMBRELLA FRAME & CANOPY	56 kg 123.5 lbs	59 kg 130.1 lbs	370 x 38 x 38 cm 145.7 x 15 x 15 cm	1
UFJCP.202 FRAME ONLY INCL. PROTECTION COVER	51 kg 112.4 lbs	52 kg 114.6 lbs	370 x 38 x 38 cm 145.7 x 15 x 15 cm	1
UCJCP.202 CANOPY ONLY	5 kg 11 lbs	7 kg 15.4 lbs	60 x 46 x 11 cm 23.6 x 18.1 x 4.3"	1
UBJCP.2S-3S BASE	158 kg 348 lbs	167 kg 368.2 lbs	103 x 103 x 17 cm 40.6 x 40.6 x 6.7"	1
UBIGB-JCP.2S-3S IN GROUND BASE	6 kg 13.2 lbs	7 kg 15.4 lbs	27 x 52 x 27 cm 10.6 x 20.5 x 10.6"	1
UBOGB-JCP.2S-3S ON GROUND BASE	6.5 kg 14.33 lbs	7 kg 15.4 lbs	27 x 27 x 6 cm 10.6 x 10.6 x 2.4"	1
UPJCP.3S-X77 PROTECTION COVER	0.8 kg 1.8 lbs	1 kg 2.2 lbs	17 x 48 x 4 cm 6.7 x 18.9 x 1.6"	1

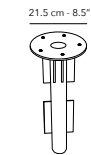


All dimensions do not include the parasol base.
 * LOXX* to easily attach and remove the canopy from the frame.
 ** Easy to open and close without touching furniture.



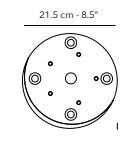
BASE

- Base with four wheels that rotate 360°, each with a brake to secure the umbrella.
- Has the same colour as the frame.
- We provide a charcoal parasol base for a frame in alu teak and cappuccino.



IN GROUND BASE

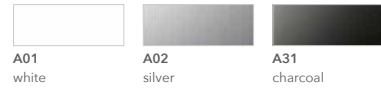
Anchored in the ground with concrete. Fixed and cannot be moved.



FLOOR FIXING PLATE

Anchored in the ground with concrete. Fixed and cannot be moved.

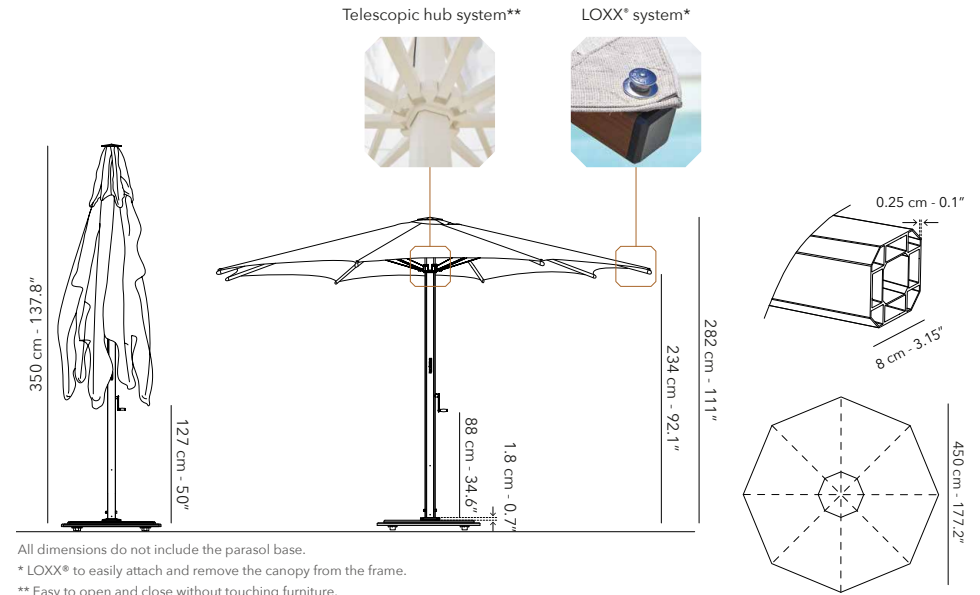
FRAME



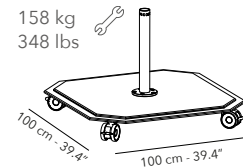
CANOPY



JCP.203 - ø 450 cm	Weight net	Weight gross	Packaging CBM / CCF	Units
UMBRELLA FRAME & CANOPY	42 kg 92.6 lbs	44.5 kg 98.10 lbs	370 x 38 x 38 cm 145.7 x 15 x 15 cm	1
UFJCP.203 FRAME ONLY INCL. PROTECTION COVER	37 kg 81.6 lbs	37.5 kg 82.7 lbs	370 x 38 x 38 cm 145.7 x 15 x 15 cm	1
UCJCP.203 CANOPY ONLY	5 kg 11 lbs	7 kg 15.4 lbs	60 x 46 x 11 cm 23.6 x 18.1 x 4.3"	1
UBJCP.2S-3S BASE	158 kg 348 lbs	167 kg 368.2 lbs	103 x 103 x 17 cm 40.6 x 40.6 x 6.7"	1
UBIGB-JCP.2S-3S IN GROUND BASE	6 kg 13.2 lbs	7 kg 15.4 lbs	27 x 52 x 27 cm 10.6 x 20.5 x 10.6"	1
UBOGB-JCP.2S-3S ON GROUND BASE	6.5 kg 14.33 lbs	7 kg 15.4 lbs	27 x 27 x 6 cm 10.6 x 10.6 x 2.4"	1
UPJCP.3S-X77 PROTECTION COVER	0.8 kg 1.8 lbs	1 kg 2.2 lbs	17 x 48 x 4 cm 6.7 x 18.9 x 1.6"	1

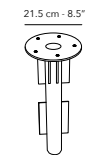


All dimensions do not include the parasol base.
 * LOXX® to easily attach and remove the canopy from the frame.
 ** Easy to open and close without touching furniture.



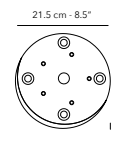
BASE

- Base with four wheels that rotate 360°, each with a brake to secure the umbrella.
- Has the same colour as the frame.
- We provide a charcoal parasol base for a frame in alu teak and cappuccino.



IN GROUND BASE

Anchored in the ground with concrete. Fixed and cannot be moved.



FLOOR FIXING PLATE

Anchored in the ground with concrete. Fixed and cannot be moved.

To enhance the durability and appearance, we recommend following our care instructions regularly.

The umbrella should never be used in strong wind or rainy conditions. An open umbrella should never be left unattended. The umbrella should be protected against blurring or damage by using its protection cover. The protection cover can be placed over the umbrella and pole. Store the umbrella in a dry place when not in use.

FRAME & BASE

Clean the aluminium frame with a damp cloth, mild soap and water. Do not use any sharp tool to avoid scratches.



CANOPY

Before use, you can apply an invisible film to make the canopy stain and water repellent by using a textile protector. You can maintain and clean your canopy by following a few simple steps:

- Brush off loose dirt before it becomes embedded in the fabric.
- Hose down.
- Spot clean soon after stains occur with water and mild soap or a textile cleaner (no detergents). Use a soft bristle brush to clean.
- Allow soap to soak in.
- Rinse thoroughly.
- Always let the canopy air dry completely before storing or covering.

Machine wash in cold water. Depending on wash load size, use normal amounts of mild laundry detergent and add 1 cup of bleach. Allow fabric to air dry.

NEVER SUBJECT TO EXCESSIVE HEAT, STEAM PRESS OR TUBLE DRY AS THE FABRIC WILL SHRINK.

		Weight net	Weight gross	Packaging CBM / CCF	Units
	SPCOR-12ML CORRECTOR PEN A01 white, A03 linen, A11 taupe, A31 charcoal or A32 black	48 g 0.11 lbs	53 g 0.12 lbs	3 x 7 x 3 cm 1.2 x 2.8 x 1.2"	1
	PT000388 FABRIC MAINTENANCE KIT Includes 2 scrubbing sets, 3 application cloths, textile protector 750 ml, textile cleaner 750 ml	1.7 kg 3.7 lbs	1.9 kg 4.2 lbs	21 x 28 x 10.5 cm 8.3 x 11 x 4.2"	1



MADE FOR **SHADE &**
OUTDOOR LIVING.

www.jardinico.com